

**ÜBERSICHTSZEICHNUNG**  
**ASSEMBLY DRAWING**

**GHOST**



**E-SQUARE TREKKING ESSENTIAL (MY21)**

Datum: 17-05-2021

Version: 01



E-SQUARE TREKKING ESSENTIAL (MY21)

date: 17-05-2021

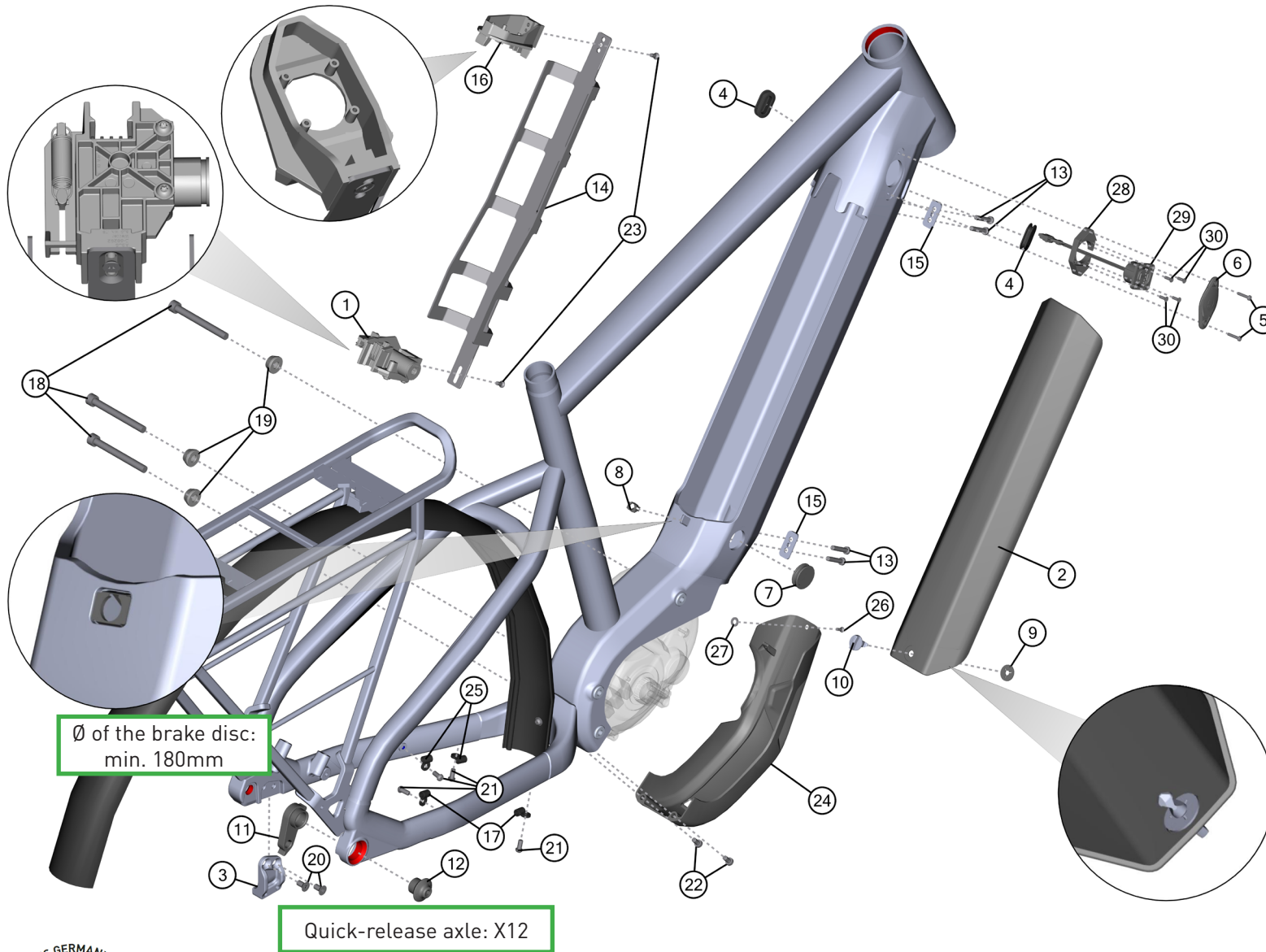
version: 01

page 1 / 8

# ÜBERSICHTSZEICHNUNG

## ASSEMBLY DRAWING main frame

# GHOST



**Hinweis:** Bei den Schrauben muss mittelfeste Gewindesicherung verwendet werden. Rote Flächen müssen gefettet werden.

**Note:** use medium strength screw lock for screw threads. red surfaces has to be greased.

# ÜBERSICHTSZEICHNUNG

## ASSEMBLY DRAWING main frame

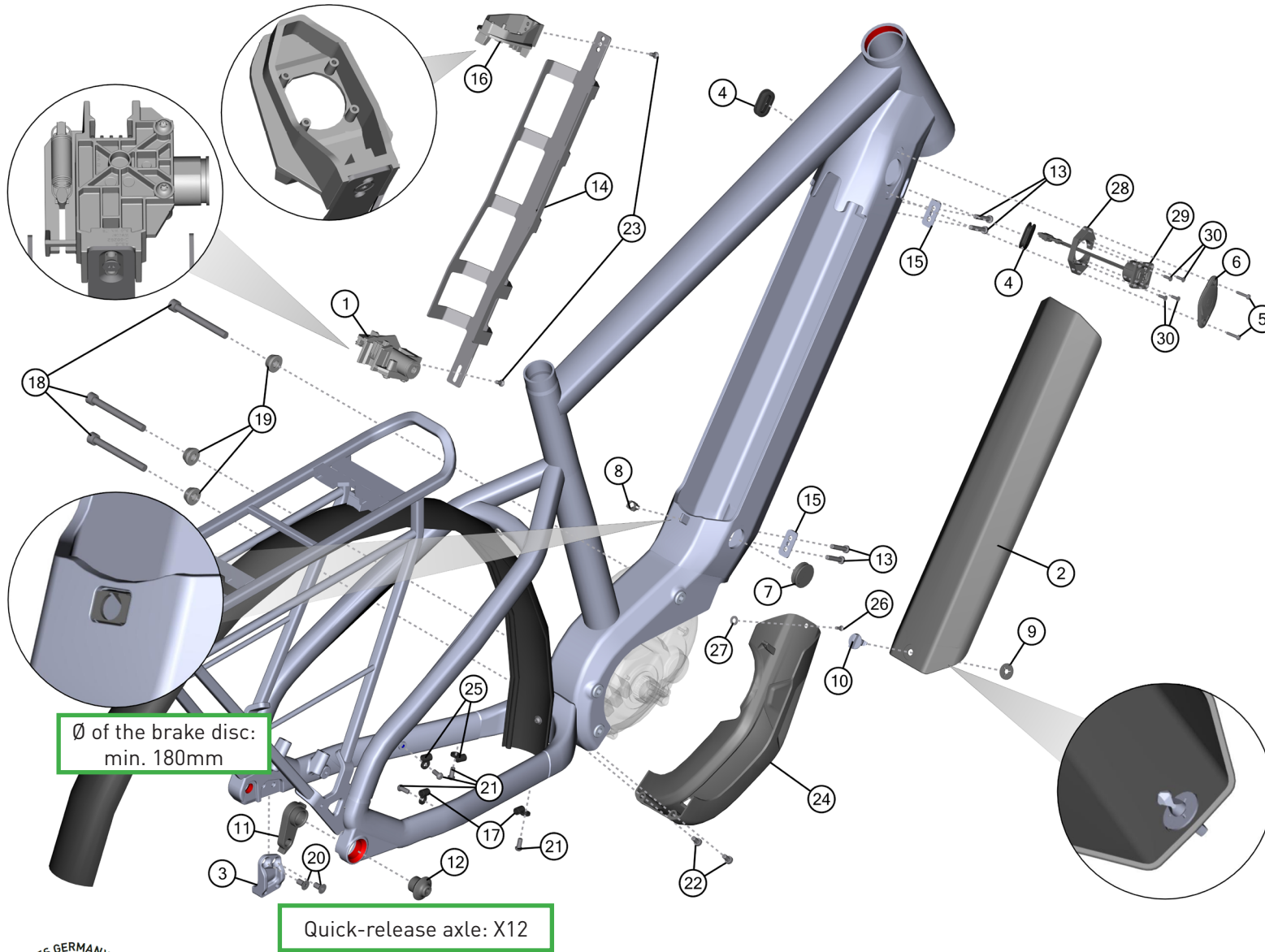
# GHOST

BOM-ID	Description	Specification	Torque	Item no.	QTY
1	Battery lock			LO0002	1
2	Battery cover			FRPR0070	1
3	Kickstand Adaptor			SMKS0001	1
4	Cable Routing Rubber			FROT0054	2
5	Lens head screw	TX10 - M3 x 16 mm	1 Nm	FRSC0071	2
6	Charge socket cover			FROT0097	1
7	Rubber ring			FROT0050	1
8	Clip			FROT0046	1
9	Holderplate			FROT0047	1
10	Locking pin with handle			FROT0048	1
11	Hanger			FRHG0025	1
12	Hanger nut		20 Nm	FRNT0008	1
13	Hexagon socket screw (flat head)	IS3 - M5 x 20 mm	6 Nm	FRSC0116	4
14	Cable mount plate			FROT0053	1
15	Plate for fixing			FROT0102	2
16	Battery Connector			FROT0210	1
17	Cable guide for 1 cable			SM0002	2
18	Hexagon socket screw	IS6 - M8 x 75 mm	22 Nm	FRSC0109	3
19	Cap for hexagon socket screw			FRSC0110	3
20	Counter sunk screw	T30 - M6 x 13 mm	11 Nm	SMSC0006	2
21	Lens head screw	TX25 - M5 x 12 mm	6 Nm	SM0919	4
22	Hexagon socket screw	IS4 - M5 x 25 mm	6 Nm	SM1230	2
23	Counter sunk screw	TX20 - M4 x 12 mm	3 Nm	FRSC0111	2
24	Motor cover			FRPR0073	1
25	Cable guide for 2 cable			SM0263	2

# ÜBERSICHTSZEICHNUNG

## ASSEMBLY DRAWING main frame

# GHOST



**Hinweis:** Bei den Schrauben muss mittelfeste Gewindegewissicherung verwendet werden. Rote Flächen müssen gefettet werden.

**Note:** use medium strength screw lock for screw threads. red surfaces has to be greased.

# ÜBERSICHTSZEICHNUNG

## ASSEMBLY DRAWING main frame

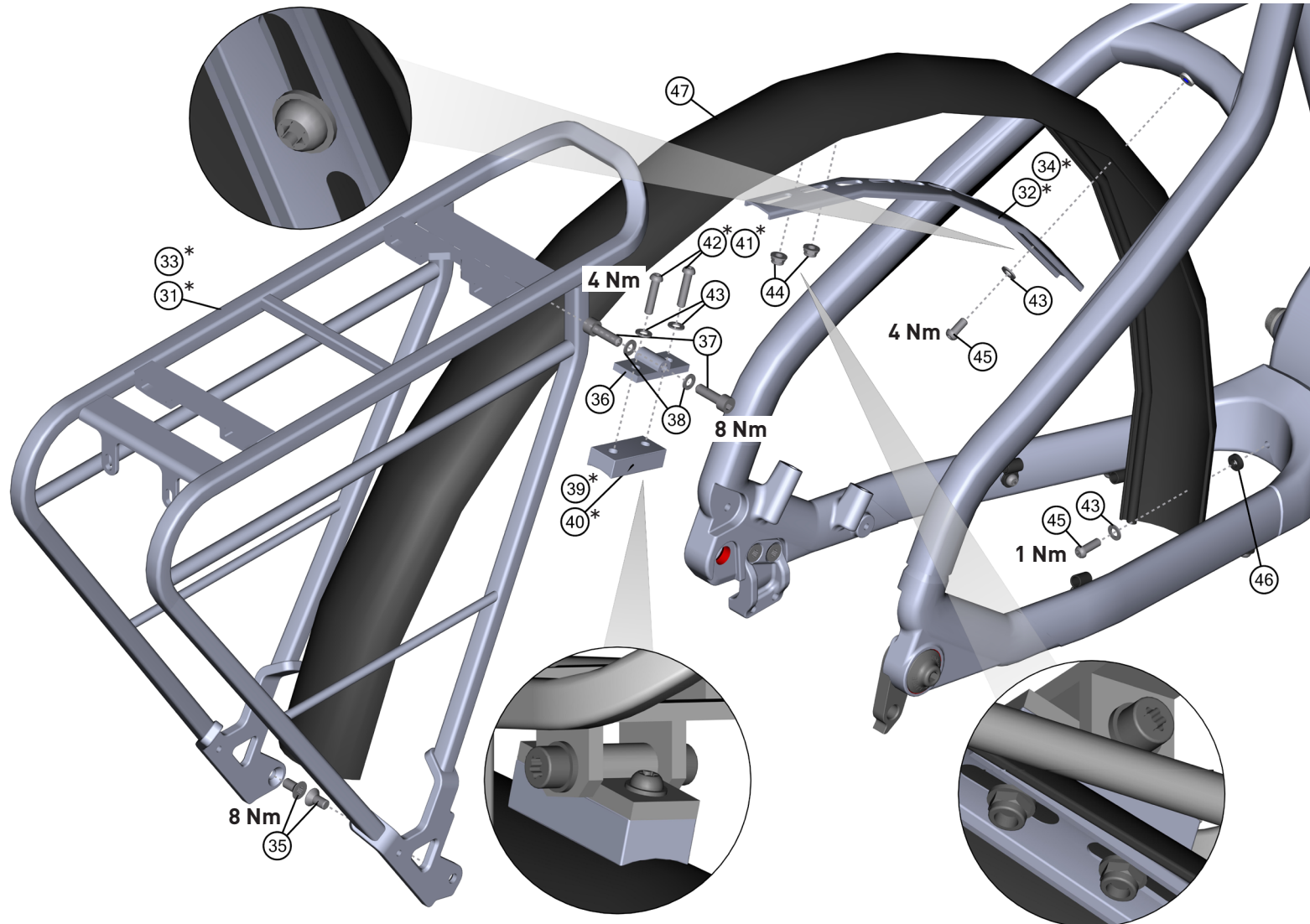
# GHOST

BOM-ID	Description	Specification	Torque	Item no.	QTY
26	Counter sunk screw	IS2,5 - M4 x 8 mm	3 Nm	FRSC0090	1
27	Washer	ø 4,3 mm		FRWS0047	1
28	Charging port frame			ELOT0010	1
29	Charging socket			EZ2632	1
30	Counter sunk screw	TX8 - M3 x 10 mm	1 Nm	FRSC0127	4

# ÜBERSICHTSZEICHNUNG

ASSEMBLY DRAWING carrier and fender

# GHOST



**Hinweis:** Bei den Schrauben muss mittelfeste Gewindegewissicherung verwendet werden.  
Rote Flächen müssen gefettet werden.

**Note:** use medium strength screw lock for screw threads.  
red surfaces has to be greased.

# ÜBERSICHTSZEICHNUNG

## ASSEMBLY DRAWING carrier and fender

# GHOST

BOM-ID	Description	Specification	Torque	Item no.	QTY
31*	Carrier <b>(depending which is installed)</b>			CA0017	1
32*	Carrier rail <b>(depending which is installed)</b>			SMF0025	1
33*	Carrier <b>(depending which is installed)</b>			CA0020	1
34*	Carrier rail <b>(depending which is installed)</b>			CA0021	1
35	Counter sunk screw	TX30 - M6 x 14 mm (8.8)	8 Nm	FRSC0135	2
36	Plate for carrier			SMF0024	1
37	Hexagon socket screw (flat head)	IS4 - M6 x 14 mm (8.8)	8 Nm	SM1693	2
38	Washer	ø 6,4 mm		SM1243	2
39*	Carrier spacer 5mm <b>(depending which is installed)</b>			FROT0228	1
40*	Carrier spacer 10mm <b>(depending which is installed)</b>			FROT0211	1
41*	Lens head screw for 5mm carrier spacer <b>(depending which is installed)</b>	IS3 - M5 x 20 mm (10.9)	4 Nm	SM1192	2
42*	Lens head screw for 10mm carrier spacer <b>(depending which is installed)</b>	IS3 - M5 x 25 mm (10.9)	4 Nm	SM1193	2
43	Washer	ø 5,3 mm		SM1242	4
44	Self locking nut with flange	M5		FRSC0112	2
45	Lens head screw	TX25 - M5 x 14 mm (8.8)	1 & 4 Nm see drawing	FRSC0065	2
46	Plastic spacer	ø 5,2 x 10 x 3 mm		SM1142	1
47	Rear fender			FER0028	1

# ÜBERSICHTSZEICHNUNG

## ASSEMBLY DRAWING

# GHOST

FACT SHEET:	
SHOCK LENGTH:	-----
SHOCK HARDWARE TOP:	-----
SHOCK HARDWARE BOTTOM:	-----
HEADSET TOP:	ZS 44
HEADSET BOTTOM:	ZS 56
SEATPOST DIAMETER:	31,6 MM
CLAMP INNER DIAMETER:	34,9 MM
BOTTOM BRACKET:	-----
KICKSTAND:	KSA18 (Adapter required)
ISCG STANDARD:	-----
CARRIER MOUNT:	YES
FENDER COMPATIBLE:	YES

DROPPER SEATPOST READY:	NO
WATTERBOTTLE MOUNT:	1x
MAXIMUM PERMISSIBLE TOTAL WEIGHT:	150 KG
MAXIMUM TIRE SIZE:	
WHEEL SIZE:	27,5"
QUICK RELEASE LENGTH:	169 MM
OVER-LOCKNUT DIMENSION (O.L.D.):	148 MM
FD CLAMP SIZE:	-----
FD TYPE:	-----
ENGINE:	YAMAHA PW-ST
BATTERY:	SIMPLO 500 WH
DISPLAY:	YAMAHA DISPLAY A